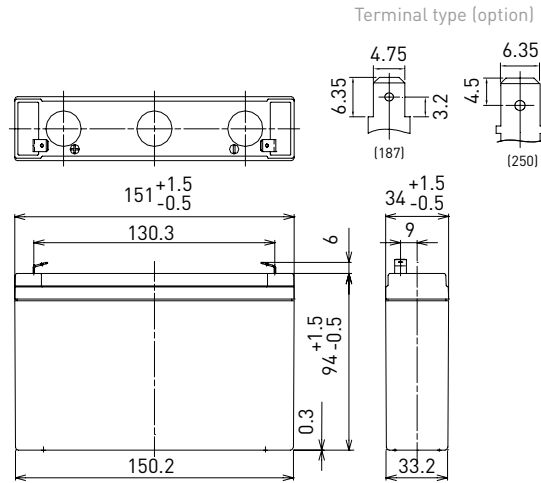


# LC-R067R2P/P1\*1

FOR MAIN AND STANDBY POWER SUPPLIES.  
 EXPECTED TRICKLE DESIGN LIFE: 6 - 9 YEARS AT 20°C  
 ACCORDING TO EUROBAT.

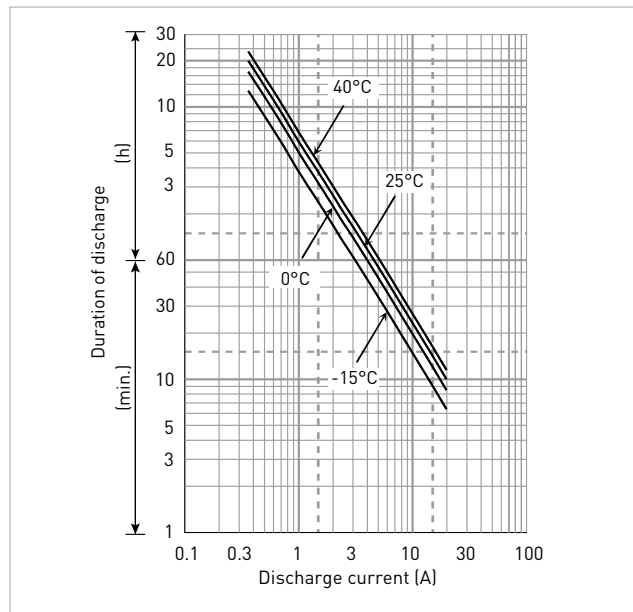
## DIMENSIONS (MM)



Contents indicated (including the recycle marking, etc.) are subject to change without notice. Battery case resin: standard (UL94 HB)

| Specifications            |  | LC-R067R2P/P1*1 |
|---------------------------|--|-----------------|
| Nominal voltage [V]       |  | 6               |
| Nominal capacity          | 20 hours rate (Ah)                                     | 7.2             |
| Dimensions                | Length (mm)  | 34              |
|                           | Width (mm)   | 151             |
|                           | Total height (mm)                                      | 100             |
| Approx. mass (kg)         |  | 1.30            |
| Terminal type             |  | Faston 187/250  |
| Capacity (25°C)           | 20 hours rate (Ah)                                     | 7.2             |
|                           | 10 hours rate (Ah)                                     | 6.6             |
|                           | 3 hours rate (Ah)                                      | 5.8             |
|                           | 1 hour rate (Ah)                                       | 4.9             |
| Impedance (mΩ)            | Fully charged battery (25°C)                           | 11              |
|                           | Temperature dependency of capacity [%] - 20 hours rate |                 |
|                           | 40°C   | 102             |
|                           | 25°C   | 100             |
|                           | 0°C  | 85              |
|                           | -15°C  | 65              |
| Remaining capacity (25°C) | After 3 months (%)                                     | 91              |
|                           | After 6 months (%)                                     | 82              |
|                           | After 12 months (%)                                    | 64              |

## DURATION OF DISCHARGE VS. DISCHARGE CURRENT



## WATT TABLE (25°C)

(Wattage/battery)

| Cut-off | 3min. | 5min. | 10min. | 15min. | 20min. | 30min. | 45min. | 1h   | 1.5h | 2h   | 3h   | 4h   | 5h   | 6h   | 10h  | 20h  |
|---------|-------|-------|--------|--------|--------|--------|--------|------|------|------|------|------|------|------|------|------|
| 4.80V   | 215   | 167   | 110    | 83.5   | 67.1   | 49.2   | 36.0   | 28.2 | 22.3 | 17.3 | 12.3 | 9.60 | 7.69 | 6.40 | 4.19 | 2.30 |
| 4.95V   | 202   | 143   | 93.5   | 79.5   | 64.8   | 48.2   | 35.8   | 27.6 | 21.9 | 17.2 | 12.1 | 9.53 | 7.63 | 6.27 | 4.18 | 2.29 |
| 5.10V   | 189   | 136   | 91.0   | 75.5   | 63.0   | 47.2   | 34.3   | 26.8 | 20.7 | 16.3 | 11.8 | 9.33 | 7.32 | 6.11 | 4.00 | 2.21 |
| 5.25V   | 172   | 124   | 86.8   | 72.2   | 60.2   | 45.4   | 33.4   | 26.2 | 19.9 | 15.8 | 11.5 | 9.15 | 7.27 | 6.05 | 3.98 | 2.14 |
| 5.40V   | 154   | 112   | 82.0   | 69.1   | 57.7   | 43.6   | 31.3   | 24.2 | 18.6 | 14.0 | 10.7 | 8.46 | 6.67 | 5.60 | 3.71 | 2.07 |

## AMPERE TABLE (25°C)

(Ampere/battery)

| Cut-off | 3min. | 5min. | 10min. | 15min. | 20min. | 30min. | 45min. | 1h   | 1.5h | 2h   | 3h   | 4h   | 5h   | 6h    | 10h   | 20h   |
|---------|-------|-------|--------|--------|--------|--------|--------|------|------|------|------|------|------|-------|-------|-------|
| 4.80V   | 38.9  | 30.6  | 19.9   | 14.8   | 12.3   | 9.10   | 6.40   | 5.10 | 3.50 | 2.70 | 2.00 | 1.53 | 1.26 | 1.02  | 0.670 | 0.363 |
| 4.95V   | 36.1  | 28.7  | 19.5   | 14.7   | 12.1   | 9.00   | 6.36   | 5.05 | 3.43 | 2.68 | 1.99 | 1.52 | 1.25 | 1.01  | 0.667 | 0.362 |
| 5.10V   | 34.2  | 26.9  | 19.0   | 14.4   | 11.9   | 8.90   | 6.30   | 5.00 | 3.36 | 2.61 | 1.97 | 1.51 | 1.24 | 1.00  | 0.660 | 0.361 |
| 5.25V   | 31.4  | 24.1  | 17.6   | 13.4   | 11.3   | 8.70   | 6.20   | 4.90 | 3.29 | 2.52 | 1.94 | 1.50 | 1.23 | 0.988 | 0.657 | 0.360 |
| 5.40V   | 29.0  | 22.3  | 15.7   | 12.5   | 11.0   | 8.40   | 6.10   | 4.80 | 3.20 | 2.40 | 1.90 | 1.48 | 1.20 | 0.972 | 0.650 | 0.358 |

All mentioned values are average values

\*1 This battery is also available with a flame-retardant battery case resin (UL94 V-0): LC-V067R2P/P1.

# LC-R067R2P/P1\*1

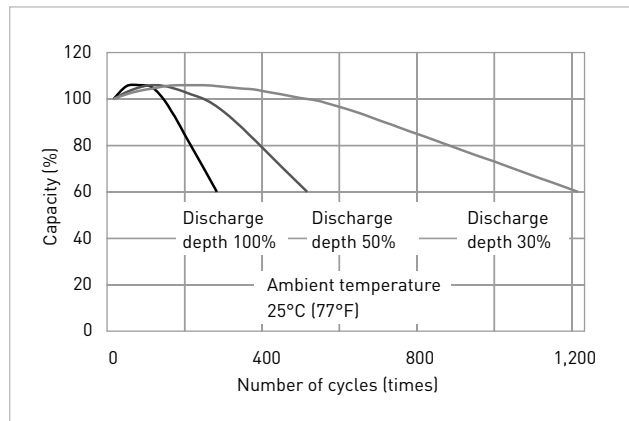
## CHARGING METHOD (25°C)

|                  |   |
|------------------|---|
| <b>Cycle use</b> | Control voltage: 7.25V - 7.45V<br>Initial current: 2.88A or smaller |
|------------------|---|

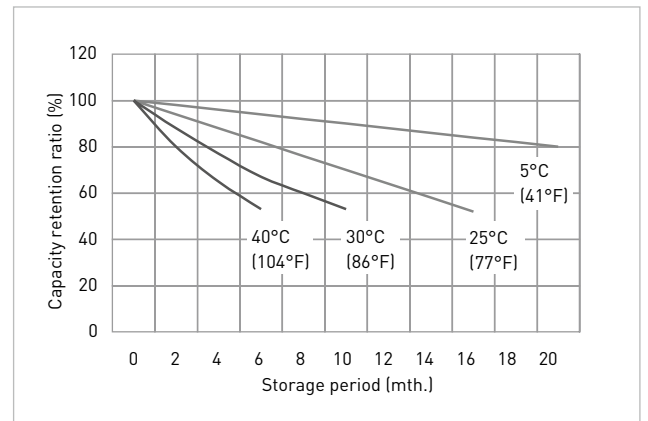
## CUT-OFF VOLTAGE

|                          |                |               |               |               |               |
|--------------------------|----------------|---------------|---------------|---------------|---------------|
| <b>Discharge current</b> | 0.360A - 1.44A | 1.44A - 3.60A | 3.60A - 7.20A | 7.20A - 14.4A | 14.4A - 21.6A |
| <b>Cut-off voltage</b>   | 5.25V          | 5.10V         | 4.95V         | 4.65V         | 4.35V         |

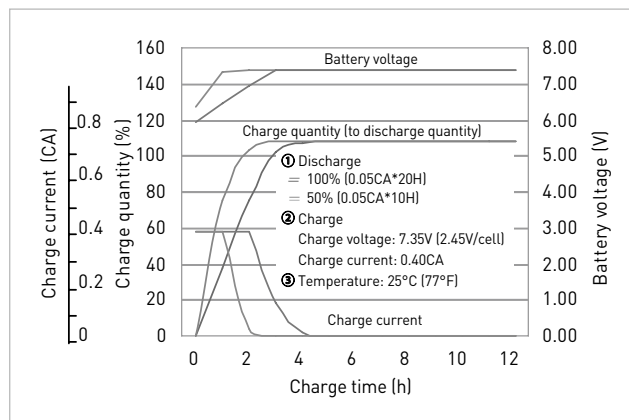
## CYCLE LIFE VS. DEPTH OF DISCHARGE (ACC. IEC 61056)



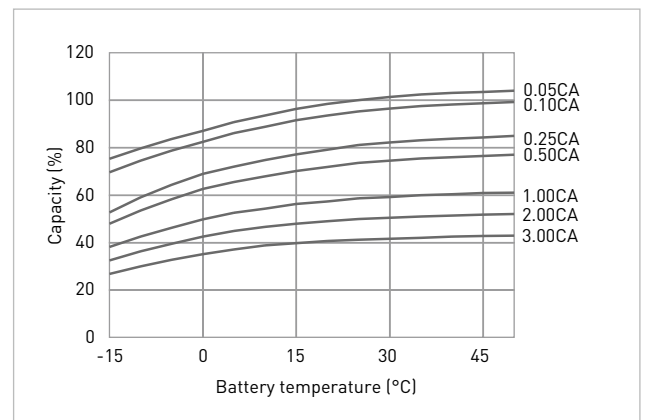
## RESIDUAL CAPACITY TEST RESULT



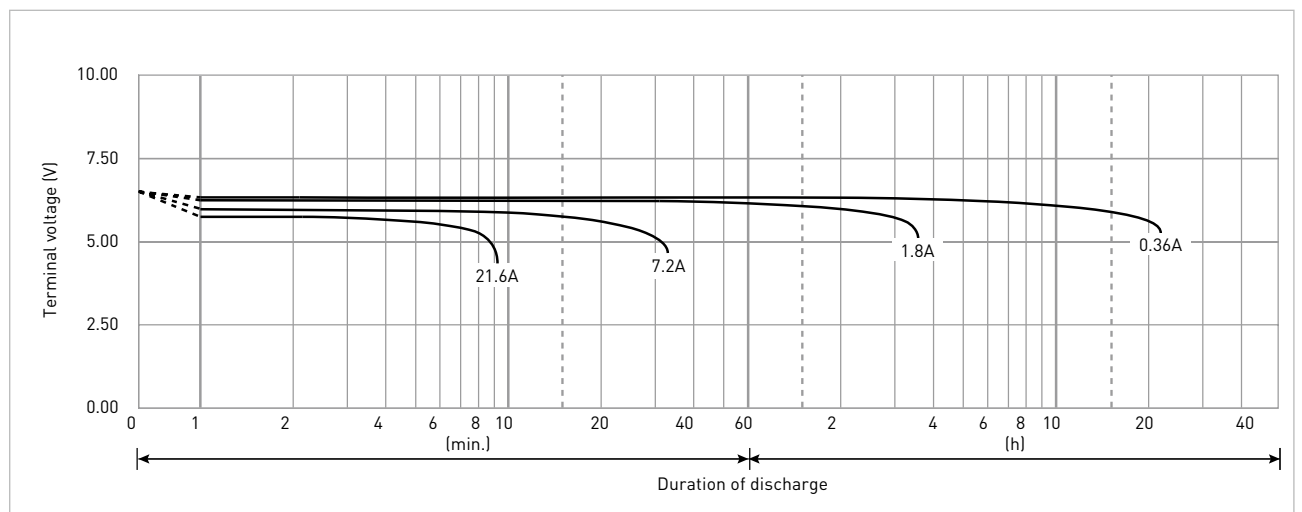
## CONSTANT-VOLTAGE CONSTANT-CURRENT CHARGE CHARACTERISTICS FOR CYCLE USE



## DISCHARGE CAPACITY BY TEMPERATURE AND BY DISCHARGE CURRENT



## DISCHARGE CHARACTERISTICS



\*1 This battery is also available with a flame-retardant battery case resin (UL94 V-0): LC-V067R2P/P1.