

# LC-XD1217PG/APG\*1

FOR STANDBY POWER SUPPLIES.  
EXPECTED TRICKLE DESIGN LIFE: 10 – 12 YEARS  
AT 20°C ACCORDING TO EUROBAT.

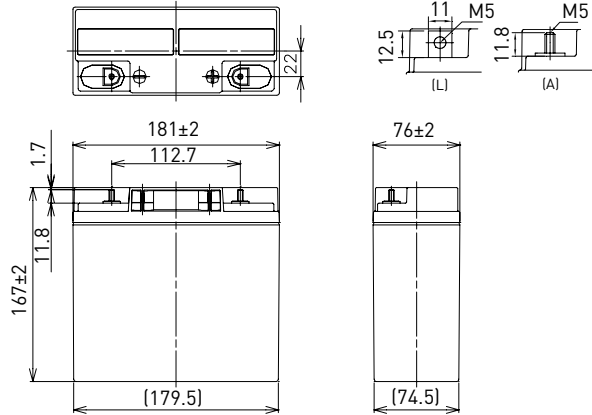


G104101

## DIMENSIONS (MM)



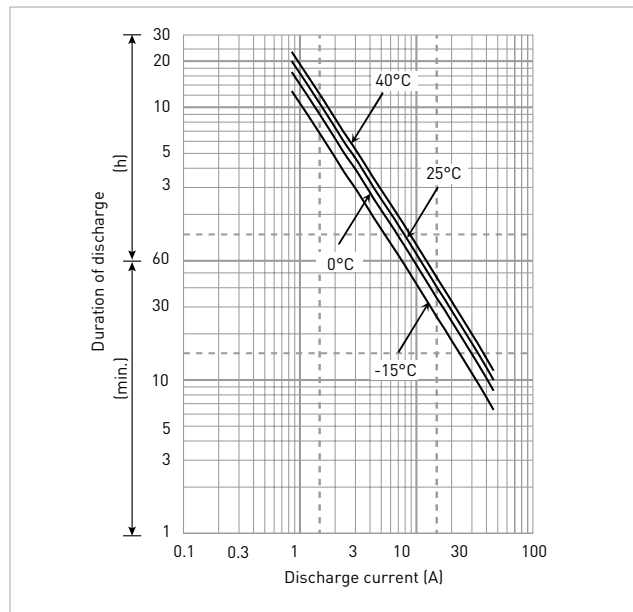
Terminal type (option)



Contents indicated (including the recycle marking, etc.) are subject to change without notice. Battery case resin: standard (UL94 HB)

Specifications		LC-XD1217PG/APG*1
<b>Nominal voltage (V)</b>		12
<b>Nominal capacity 20 hours rate (Ah)</b>		17.0
<b>Dimensions</b>	<b>Length (mm)</b>	76
	<b>Width (mm)</b>	181
	<b>Total height (mm)</b>	167
<b>Approx. mass (kg)</b>		5.90
<b>Terminal type</b>		M5 bolt/nut & threaded post
<b>Capacity (25°C)</b>	<b>20 hours rate (Ah)</b>	17.0
	<b>10 hours rate (Ah)</b>	16.0
	<b>3 hours rate (Ah)</b>	14.0
	<b>1 hour rate (Ah)</b>	12.0
<b>Impedance (mΩ) Fully charged battery (25°C)</b>		12
<b>Temperature dependency of capacity (%) – 20 hours rate</b>	<b>40°C</b>	102
	<b>25°C</b>	100
	<b>0°C</b>	85
	<b>-15°C</b>	65
<b>Remaining capacity (25°C)</b>	<b>After 3 months (%)</b>	91
	<b>After 6 months (%)</b>	82
	<b>After 12 months (%)</b>	64

## DURATION OF DISCHARGE VS. DISCHARGE CURRENT



## WATT TABLE (25°C)

(Wattage/battery)

Cut-off	3min.	5min.	10min.	15min.	20min.	30min.	45min.	1h	1.5h	2h	3h	4h	5h	6h	10h	20h
9.6V	1,021	806	526	402	337	251	177	142	97.6	75.5	56.2	43.2	35.6	28.6	19.0	10.3
9.9V	948	756	516	399	331	249	176	140	95.6	74.9	55.9	42.9	35.4	28.5	18.9	10.3
10.2V	874	708	502	391	326	246	175	139	93.7	73.0	55.4	42.6	35.1	28.3	18.7	10.2
10.5V	777	634	465	364	309	240	172	136	91.7	70.4	54.5	42.3	34.8	28.0	18.6	10.2
10.8V	656	561	415	339	301	232	169	134	89.2	67.1	53.4	41.8	33.9	27.5	18.4	10.1

## AMPERE TABLE (25°C)

(Ampere/battery)

Cut-off	3min.	5min.	10min.	15min.	20min.	30min.	45min.	1h	1.5h	2h	3h	4h	5h	6h	10h	20h
9.6V	91.8	72.2	47.0	34.9	29.0	21.5	15.1	12.0	8.26	6.37	4.72	3.61	2.97	2.39	1.58	0.86
9.9V	85.2	67.8	46.0	34.7	28.6	21.2	15.0	11.9	8.10	6.33	4.70	3.59	2.95	2.38	1.57	0.85
10.2V	78.6	63.5	44.9	34.0	28.1	21.0	14.9	11.7	7.93	6.16	4.65	3.57	2.93	2.36	1.56	0.85
10.5V	69.9	56.9	41.6	31.6	26.7	20.5	14.6	11.6	7.77	5.95	4.58	3.54	2.90	2.33	1.55	0.85
10.8V	59.0	50.3	37.1	29.5	26.0	19.8	14.4	11.3	7.56	5.67	4.49	3.49	2.83	2.29	1.53	0.85

All mentioned values are average values

\*1 This battery is also available with a flame-retardant battery case resin (UL94 V-0): LC-PD1217PG/APG.

# LC-XD1217PG/APG\*1

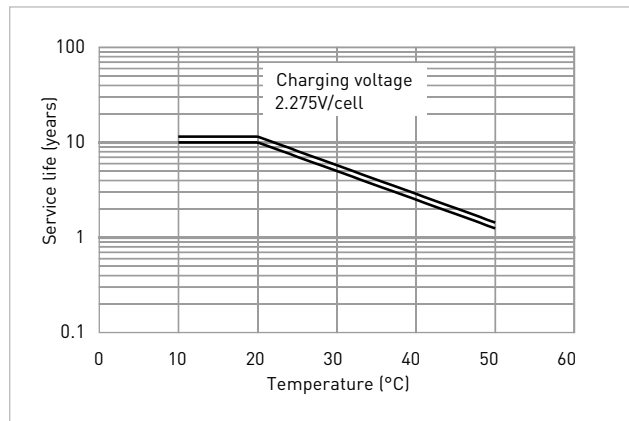
## CHARGING METHOD (25°C)

<b>Cycle use</b>	Control voltage: 13.6V - 13.8V Initial current: 2.55A or smaller
------------------	---

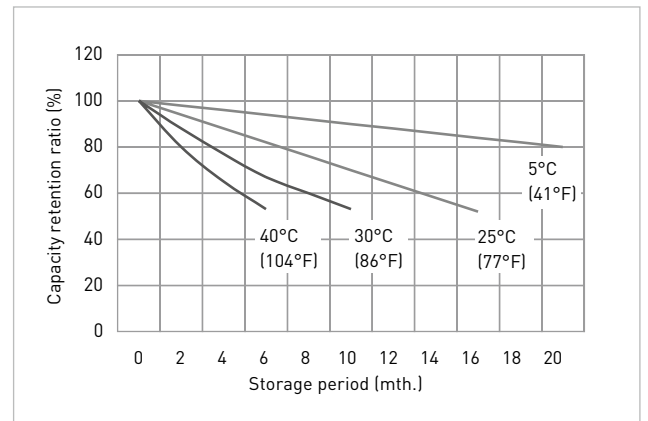
## CUT-OFF VOLTAGE

<b>Discharge current</b>	0.850A - 3.40A	3.40A - 8.50A	8.50A - 17.0A	17.0A - 34.0A	34.0A - 51.0A
<b>Cut-off voltage</b>	10.5V	10.2V	9.9V	9.3V	8.7V

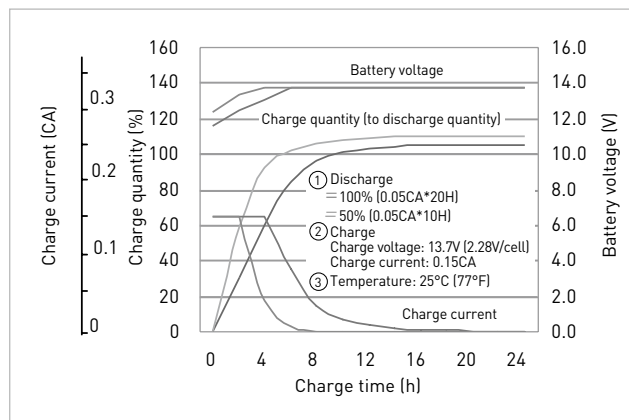
## INFLUENCE OF TEMPERATURE ON TRICKLE LIFE



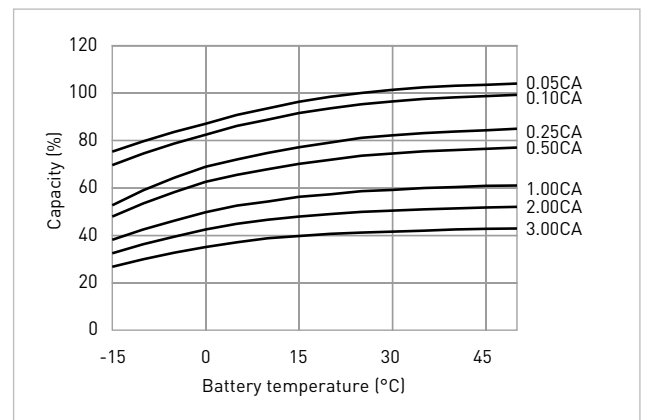
## RESIDUAL CAPACITY TEST RESULT



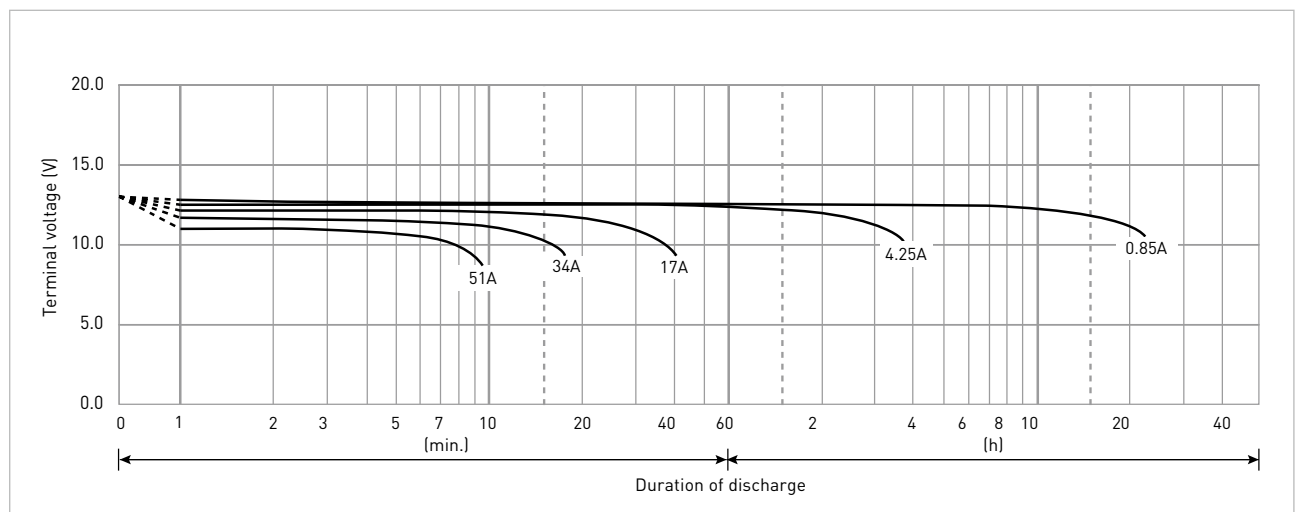
## CONSTANT-VOLTAGE CONSTANT-CURRENT CHARGE CHARACTERISTICS FOR TRICKLE USE



## DISCHARGE CAPACITY BY TEMPERATURE AND BY DISCHARGE CURRENT



## DISCHARGE CHARACTERISTICS



\*1 This battery is also available with a flame-retardant battery case resin (UL94 V-0): LC-PD1217PG/APG.